

ESSENTIAL SKIN CARE

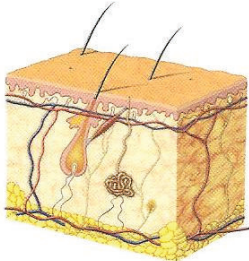
dōTERRA™

dōTERRA® Essential Skin care is a family of skin care products designed to maximize the natural power of essential oils in helping to keep your skin feeling and looking young, healthy and gorgeous.

WHAT IS SKIN?

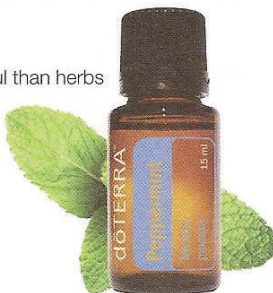
The largest organ in the body.

- Acts like a sponge to outside agents including harmful chemicals found in many consumer products.
- What you put on your skin is as important as what you eat.



WHAT ARE ESSENTIAL OILS?

- Extracts from plants
- Highly concentrated
- 50-70 times more powerful than herbs
- Wide range of uses, from cosmetics to foods to natural health solutions
- Often the inspiration for synthetically produced pharmaceutical products



100% NATURAL

- A natural way to take care of our health used by ancient cultures
- Similar properties to synthetic drugs with no side effects
- CPTG: A new standard of essential oils



Certified Pure Therapeutic Grade

NATURE & SCIENCE

dōTERRA integrates CPTG Certified Pure Therapeutic Grade essential oils with cutting-edge cosmeceutical technologies:

- State of the Art Ingredients
- Amazing Results

KEY TECHNOLOGIES

- Vitamins A, C, D, & E
- Cruciferous Vegetable Extract
- Black Cumin Seed
- Marine Spring Water
- Biomimetic Peptides
- Hyaluronic Acid
- Summer Snowflake
- Milk Peptide Complex



CLINICALLY SUPPORTED BENEFITS

of the Essential Skin care ingredients

- Stimulates collagen production
- Smooths skin texture
- Reduces appearance of wrinkles
- Minimizes mechanical creasing
- Minimizes pore appearance
- Evens tone reduces discoloration
- Protects against further damage
- Improves cellular hydration and nutrition



ANTI-AGING REGIMEN

STEP 1: CLEANSE

Facial Cleanser

Melaleuca & Peppermint

- Cleanses and invigorates
- Conditions skin
- Supports overall skin health
- Rinse with warm water & towel dry.



STEP 2: TONE

Pore Reducing Toner

Lavender, Ylang Ylang, & German Chamomile

- Inhibits skin irritation
- Soothes sensitive skin
- Reduces visible size of pores
- Apply to face and neck using a cotton pad. Excellent aftershave for men.



STEP 3: TARGET

Immortelle

Frankincense, Helichrysum, & Rose

- Provides powerful anti-oxidant
- Helps restore skin damaged from sun exposure
- Promotes tissue matrix mending and renewal
- Apply to face, neck and problem areas



Tightening Serum

Sandlewood & Myrrh

- Provides "lifting" effect
- Helps reduce signs of age spots
- Apply to face prior to moisturizer



STEP 4: MOISTURIZE

Anti-aging moisturizer

Frankincense & Jasmine

- Helps reduce signs of aging
- Promotes more even skin tone
- Apply over face and neck. Use morning and/or night.



Hydrating Cream

Lavender & Geranium

- Helps restore balance and hydration
- Promotes regeneration of connective tissue
- Rehydrates dry & mature skin, protects skin
- Enhances water retention
- Apply over face and neck. Use morning and/or night.

